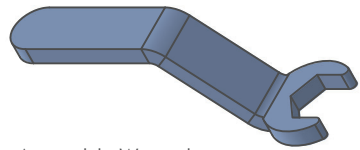




Install Video



Solimar Install



Assembly Wrench

1. Watch Installation Video

2. Remove center and outer cover plates from canopy, center is held on with magnets, for the outers you unscrew the coax housing.
3. Attach canopy to J-box this will allow you to layout toggle bolt locations
4. Remove canopy and install the EZ toggles
5. Reinstall canopy to the J-box and install the toggle screws then reattach outer cover plates
6. Make wire connections and install center cover plate
7. Figure overall height needed see chart for cut lengths (center cable is 1" shorter then outer cables)
8. See our install video on how to install coax cable. (trim length is 1 1/8")
9. Make all cable connections on the canopy first then hang the illumination bar second (with out glass installed)
10. Verify bar illuminates.
11. Remove end cap
12. Using the provided wrench undo the 4 nuts (do one side of the fixture at a time)
13. Having a helper support the opposite side, slide the first piece of glass on, then a support collar, next glass piece, next support collar, final glass then the illuminated end cap.
14. Reinstall the lock washers and nuts back on the studs and Tighten until the lock washer compresses
15. Reinstall the end cap
16. Repeat steps 9-13

